

AGENDA
COMMITTEE OF THE WHOLE MEETING
CITY OF BERLIN
TUESDAY, APRIL 4, 2017, 7:00 PM
CITY HALL COUNCIL CHAMBERS

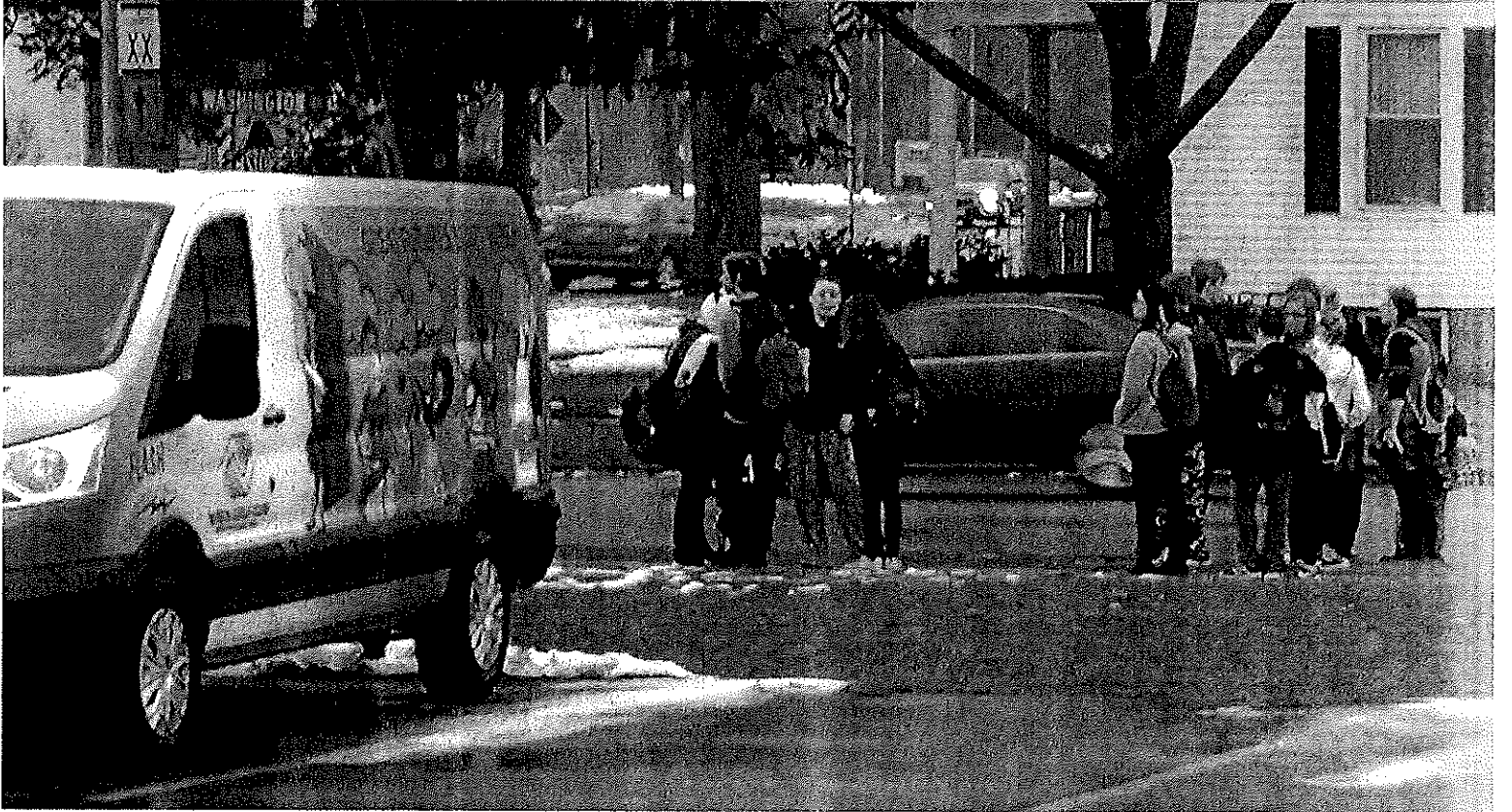
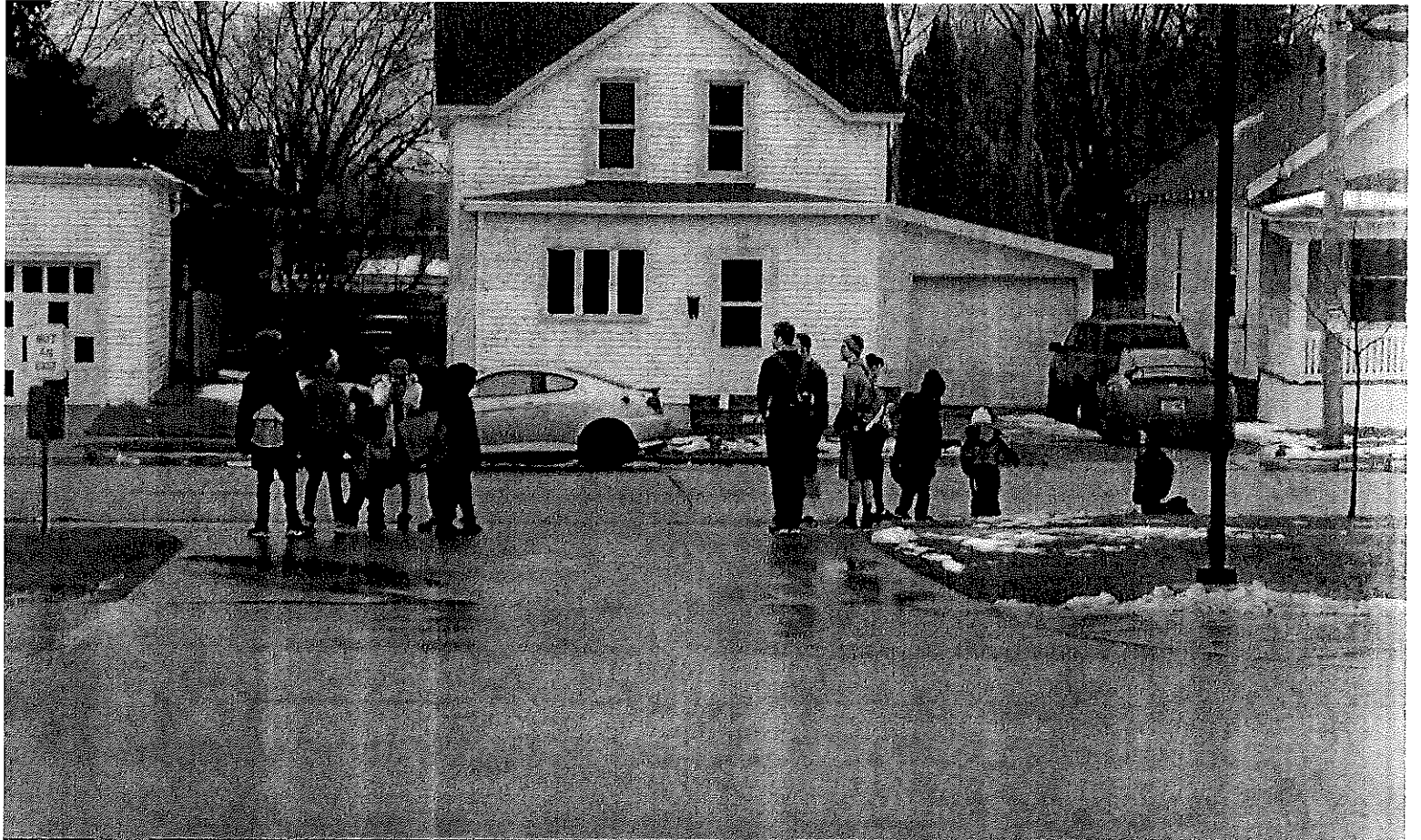
1. Roll Call.
2. General Public Comments. Registration card required (located at podium in Council Chamber).
3. Boys & Girls Club Bus Stop Proposal. RECOMMENDATION: Listen to presentation and action as appropriate.
4. Update on 182 W. Noyes Street. RECOMMENDATION: Listen to update and action as appropriate.
5. Update on 107 W. Huron Street. RECOMMENDATION: Listen to update and action as appropriate.
6. CUP Saving Grace Salvage. RECOMMENDATION: Listen to presentation and action as appropriate.
7. Motion to convene into closed session pursuant to Sec. 19.85 (1)(e), of the Wis. Statutes, to deliberate or negotiate the purchasing of public properties, the investing of public funds, or conducting other specified public business, whenever competitive or bargaining reasons require a closed session (*sidewalk encroachment issue at 101 W. Huron St.*)
8. Adjourn.

In adherence to the City of Berlin Public Meeting Participation Policy, public participation will be allowed under each agenda item at the discretion of the presiding officer, with the exception of the Consent Agenda. Attendees must register their intention to participate on either a general comments section or a specific agenda item prior to the meeting by filling out a Registration Card, which can be obtained from the Internet, City Clerk's office or in the City Hall Council Chambers at the podium. Registration Cards should be turned in prior to the meeting to either the presiding officer or City Clerk.

April 4

Boys & Girls Club of the Tri-County Area Bus Stop Proposal

- **Why**
 - The Boys & Girls Club has noticed that children are subjected to the rain, cold wind, and other harsh conditions while waiting to be picked up by the bus for school.
 - To help the children get away from the elements the Boys & Girls Club would like to build a 5ft wide by 15ft long bus stop.
- **Land**
 - Asking for permission from city to place the bus stop on city land.
 - This being the area between the sidewalk and street.
- **Cost**
 - The Boys & Girls Club has found private donors to aid in the cost of the bus stop.
 - The bus stop would become city property without incurring any cost of it
 - Covered under city insurance
- **Maintenance**
 - Boys & Girls Club to clean/pick up garbage weekly
 - Boys & Girls Club to check for damage and graffiti weekly
 - If something were to break and or become unusable the Boys & Girls Club would replace it.
- **Surrounding Land**
 - Boys & Girls Club to take care of area around bus stop
 - Including the removal of snow/salting extra sidewalk
 - Mowing and trimming grass



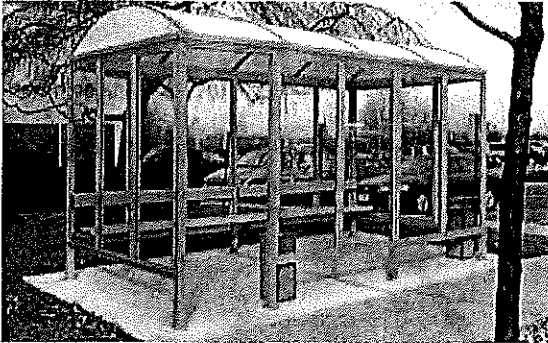


globalindustrial.com a Systemax company

Smoking Shelter Barrel Roof Four Sided With Left And Right Front Opening 15'X5'

Availability: {availability=Usually ships in 42 to 45 days, type=InStock}
Item #: WB239980B

Price: \$6,751.00



Shown with Left Front Opening

Product Information

The Barrel Roof Design Of These Smoking Shelters Offers Low Maintenance By Preventing Rain And Snow Build-Up. Four Sided Shelters with Open Left & Right Front Opening

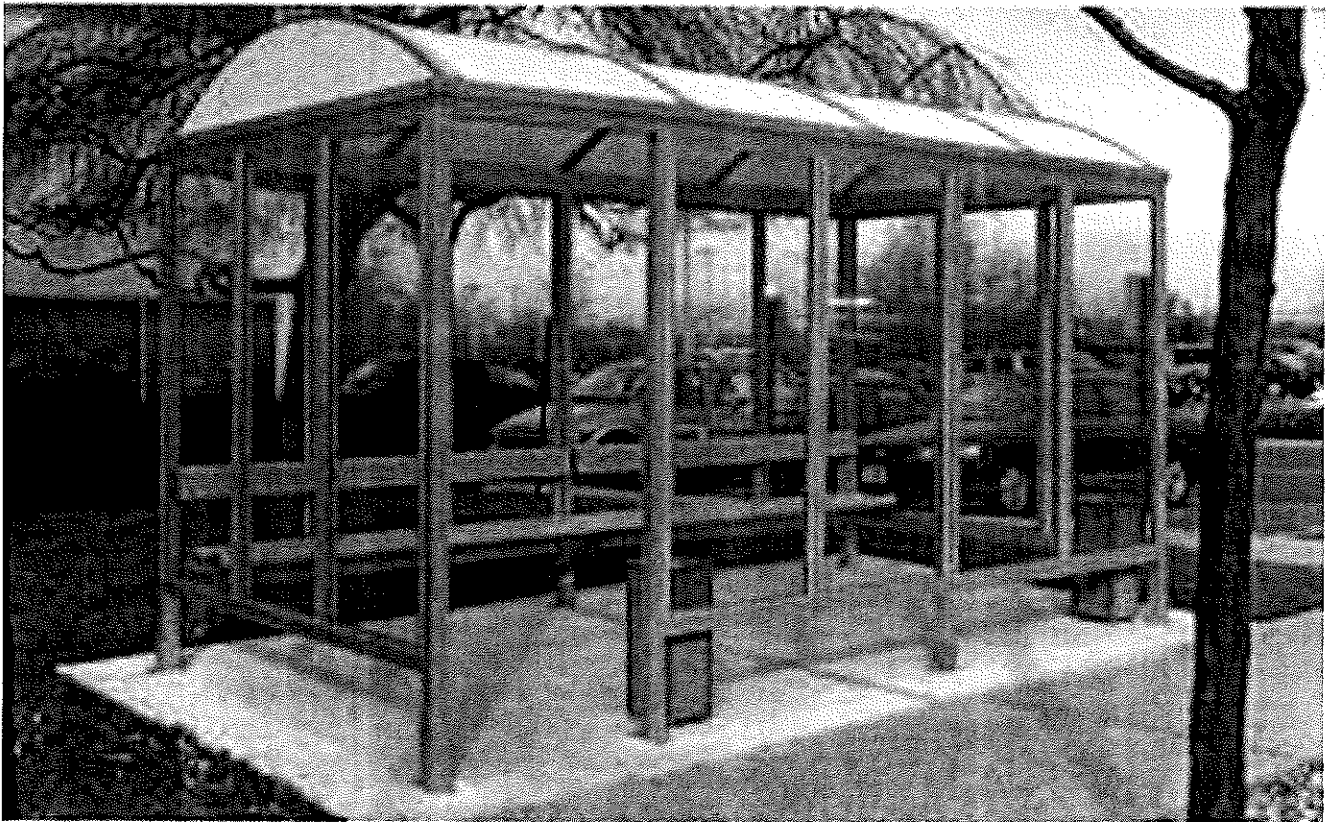
Outdoor smoking shelters help save non-smokers from second hand smoke while offering smokers a designated smoking area. These shelters can help reduce OSHA fines and reduce insurance premiums. The framing system of these butt stop smoking shelters is built with industrial grade standards to withstand years of outdoor use. Smoker shelters are made with anodized aluminum in 313 dark bronze anodic finish. Barrel roof is made with 1/4 thick double walled polycarbonate. Glass panels are made with clear 1/4 thick tempered safety glass. Outdoor shelters are pre-fabricated in sections for easy assembly and crated for low cost shipping. All shelters include an extruded aluminum bench and backrest along the rear wall to provide a comfortable sitting area for smokers. ADA compatible, GSA approved. Custom designs and sizes available.

Product Specifications

WIDTH INCHES	180
DEPTH INCHES	60
COLOR FINISH	Bronze
ASSEMBLY	Unassembled
BRAND	Handi-Hut®
CONSTRUCTION	Aluminum and Safety Glass
HEIGHT INCHES	84
MODEL	239980B
CAPACITY	8-9 People
STYLE	Barrel Roof
TYPE	4-Sided W/Left & Right Front Opening
WEIGHT LBS	950

General Sales

For product information or to place an order, please contact us at sales@globalindustrial.com, or 1-888-978-7759.



Shown with Left Front Opening

Bus stop that B&GC is proposing
has two openings. Left front
and right front



Jordan Wilcox <jwilcox@bgctric.org>

Sales Quotation # 3790549

1 message

gpalmer@globalindustrial.com <gpalmer@globalindustrial.com>

Wed, Nov 9, 2016 at 3:11 PM

To: jwilcox@bgctric.org



2505 MILL CENTER PARKWAY SUITE 100
BUFORD, GA 30518

Sales Quote

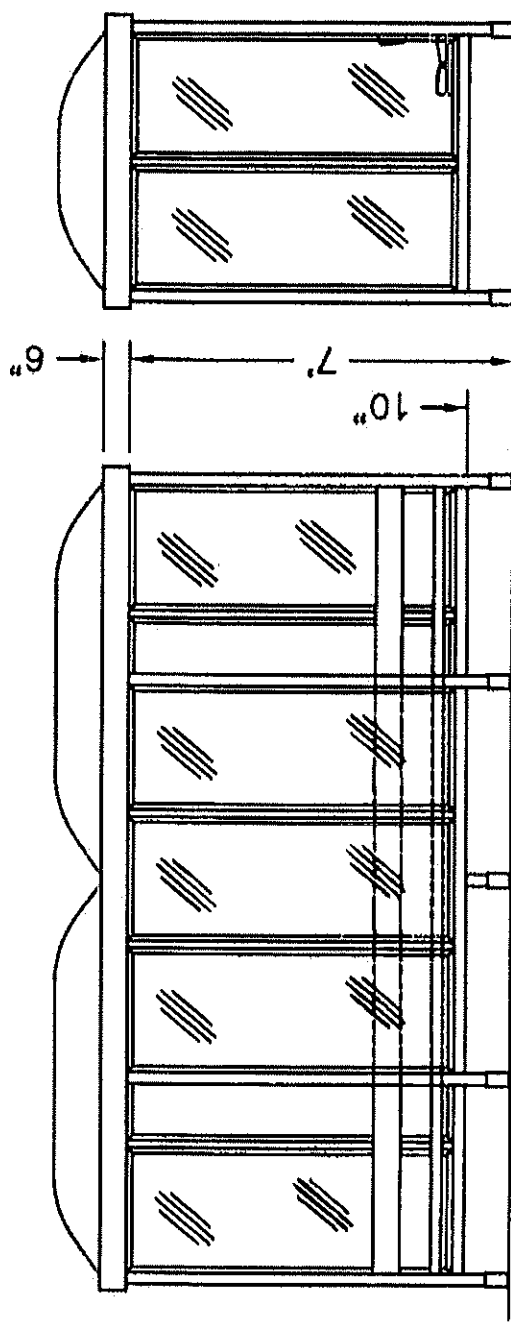
Account #: 3386861	Quote #: 3790549	Quote Issued: 11/09/2016
BOYS & GIRLS CLUB OF THE TRI-COUNTY AREA	jwilcox@bgctric.org	*Quote Expires 30 Days from Issue
JORDAN WILCOX	Phone: (920) 361-2717	
344 BROADWAY	Fax: (920) 361-1629	
BERLIN, Wisconsin 54923		
CLICK HERE TO LOGIN AND PLACE THIS ORDER ONLINE.		

Part#	Description	Shipping	Quantity	Price	Extended
239980B	Smoking Shelter Barrel Roof Four Sided With Left And Right Front Opening 15'X5'	DIRECT SHIPPERS - TRUCKING	1	\$6,490.31	\$6,490.31
Item Total:					\$6,490.31
Estimated Freight:					\$356.90
PLEASE BE SURE TO REVIEW OUR TERMS AND CONDITIONS				*Total:	\$6,847.21

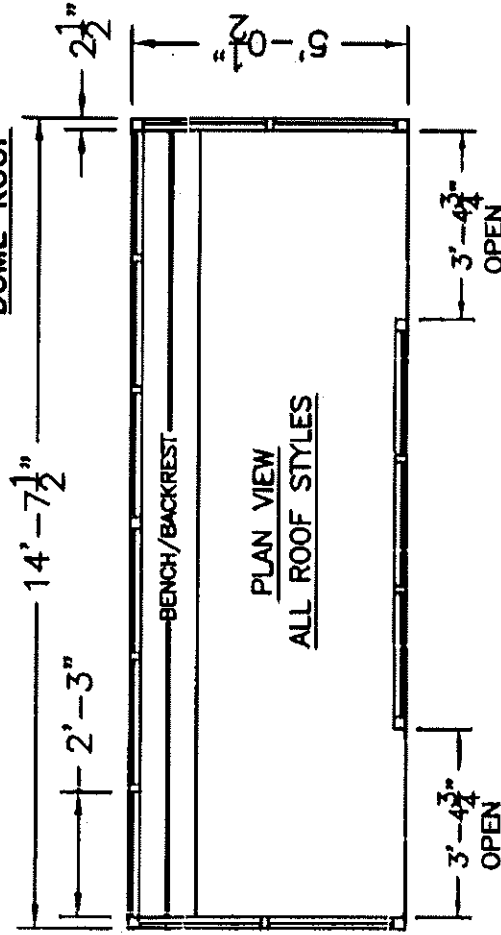
Notes	Thank you for the opportunity to help with your needs. To place your order or for further assistance please contact me. Name: GAIL PALMER Email: gpalmer@globalindustrial.com Phone: (678) 969-6524 x2524 Fax: (678) 969-6826
-------	---

*Applicable taxes and shipping charges will be added to invoice. This quote is subject to Global Industrial's Terms and Conditions of Sale

MODEL #6-2WS
BARREL ROOF



MODEL #6-2WS
DOME ROOF



ALUMINUM: 6063-T52
AVAILABLE FINISHES: DARK BRONZE ANODIZE
CLEAR ANODIZE
CUSTOM COLOR POWDER-COAT
GLAZING: 1/4" CLEAR TEMPERED GLASS
ROOF DOMES: 1/4" WHITE TRANSLUCENT ACRYLIC
BARREL ROOFS: 1/4" TWIN WALL POLYCARBONATE
POLYCARB HIP ROOFS: 1/4" TWIN WALL POLYCARBONATE
STANDING SEAM ROOFS: 6063 ALUMINUM DECKING
BENCH/BACKREST: EXTRUDED ALUMINUM

MODEL #6-2WS
ACCOMMODATES 8-9

BROADWAY STREET
STREET WAS UNDER CONSTRUCTION ON
THE DATE OF THIS SURVEY

STORM SEWER
(UNDER BROADWAY STREET)
CONSTRUCTED BY THE CITY
DATE OF THE SURVEY
C-12" DIA. 100' PER
C-12" DIA. 100' PER
C-12" DIA. 100' PER
C-12" DIA. 100' PER

CONTRACTOR TO
EXPLORE SEWER
ELEVATION PRIOR TO
INSTALLING LATERAL
TO BUILDING

8" WATER LATERAL
8" SANITARY LATERAL
PROP. ROOF DRAIN
CONV.

PROPOSED BUILDING

FLAG POLE (SEE
ARCHITECT DETAIL)

BIKE RACK (SEE
ARCHITECT DETAIL)

PLAY GROUND

25'x 14' DUMPSTER
ENCLOSURE ON 25'x
24' CONC. PAD 6"
THICK (SEE
ARCHITECT DETAIL)

117.0'

PROPOSED LOCATION OF
BUS STOP/SHELTER

WASHINGTON STREET

EXISTING SITE CONDITIONS
(FROM SURVEY)
161,129 TOTAL SQ. FT. OF PROPERTY
14,862.4 SQ. FT. BUILDING
22,220 SQ. FT. WALKS AND ASPHALT
36,072.4 TOTAL ASPHALT SURFACE (77.2%)
124,456.6 SQ. FT. OPEN SPACE (77.2%)

PROPOSED SITE CONDITIONS
161,129 TOTAL SQ. FT. OF PROPERTY
16,134.0 SQ. FT. BUILDING
16,513.0 SQ. FT. WALKS AND ASPHALT
37,674.0 TOTAL ASPHALT SURFACE (77.2%)
112,336.0 SQ. FT. OPEN SPACE (77.2%)

STATION 11+00
ELEVATION 77.00
ELEVATION 77.00
ELEVATION 77.00

STATION 11+00
ELEVATION 77.00
ELEVATION 77.00
ELEVATION 77.00

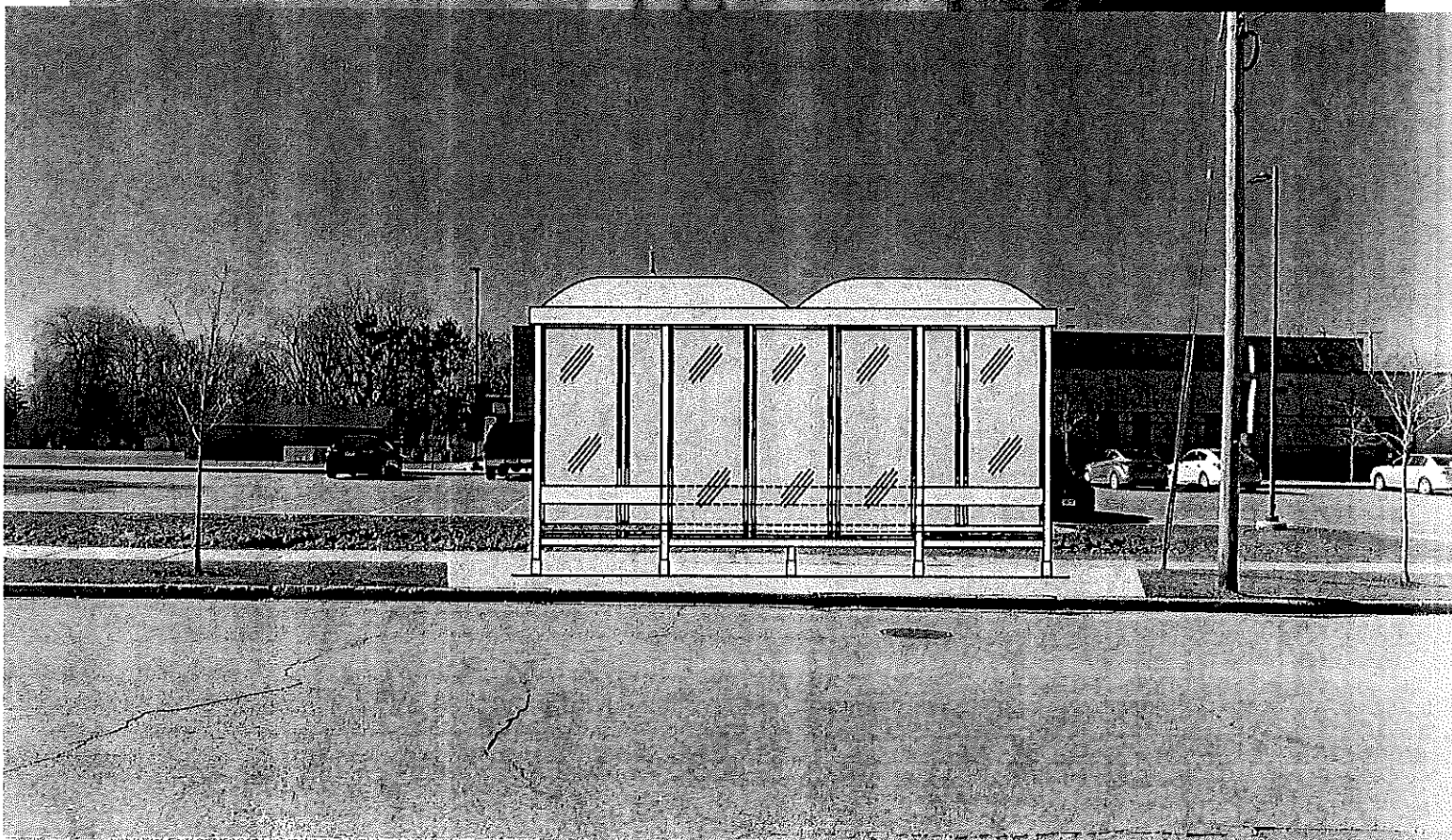
STATION 11+00
ELEVATION 77.00
ELEVATION 77.00
ELEVATION 77.00

STATION 11+00
ELEVATION 77.00
ELEVATION 77.00
ELEVATION 77.00

STATION 11+00
ELEVATION 77.00
ELEVATION 77.00
ELEVATION 77.00

STATION 11+00
ELEVATION 77.00
ELEVATION 77.00
ELEVATION 77.00

S Washington St

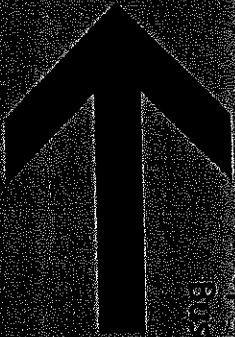


Sidewalk

8ft 8 inch

5 ft

15 ft



Proposed Location of
Bus Stop/Shelter

Washington St.

DATE: March 30, 2017

TO: Committee of the Whole

FROM: Lindsey Kemnitz

RE: CUP Saving Grace Salvage

BACKGROUND:

September 30, 2014 Saving Grace Salvage was approved by Plan Commission for a conditional use permit for adaptive reuse of a church at 246 E. Park Ave. Plan commission approved the permit for the following buildings: former church & former school. Saving Grace Salvage returned to Plan Commission to amend the conditional use to be allowed to use the parking lot for special events such as flea markets.

RECOMMENDATION:

To allow storage and display in the parking lot located at Saving Grace Salvage at 246 E. Park Avenue to a maximum of three events per calendar year, unless approved by plan commission without a public hearing. The parking lot cannot be used for storage and display prior to Friday and must be removed by end of the day Sunday. For the special events no activity is allowed including setup and take down prior to 7am and after 9pm.